



## Christmas on the Coast Ornaments

2448 Gordon Smith Drive Mobile, Alabama 36617

Phone: 251-471-1581 Fax: 251-476-4303

Web: [www.goodwill-easterseals.org](http://www.goodwill-easterseals.org) E-mail: [info@gesgc.org](mailto:info@gesgc.org)

Name \_\_\_\_\_

Shipping Address \_\_\_\_\_

Phone Number \_\_\_\_\_ Payment Method: **Cash** **Credit** **Check #** \_\_\_\_\_

**Credit Card:** Visa MC AMEX Discover **Card Number** \_\_\_\_\_ **Exp** \_\_\_\_\_

Ornament	Quantity	Total
2011 Cannon at the Loop— <i>Mobile</i>		\$12.00
2010 Azalea Trail Maids— <i>Mobile</i>		\$12.00
2009 Cathedral of the Immaculate Conception— <i>Mobile</i>		\$12.00
2008 Mardi Gras— <i>Mobile</i>		\$12.00
2007 RSA Tower Battle House Hotel— <i>Mobile</i>		\$12.00
2006 Barton Academy— <i>Mobile</i>		\$12.00
2005 USS Alabama— <i>Mobile</i>		<b>RETIRED</b>
2004 Dog River Bridge— <i>Mobile</i>		<b>RETIRED</b>
2003 Middle Bay Lighthouse— <i>Mobile</i>		<b>RETIRED</b>
2002 The Grand Hotel— <i>Mobile</i>		<b>RETIRED</b>
2001 The Nettie Quill— <i>Mobile</i>		\$12.00
2000 The Battle House— <i>Mobile</i>		\$12.00
1999 Richards DAR House— <i>Mobile</i>		<b>RETIRED</b>
1998 Oakleigh at Christmas— <i>Mobile</i>		<b>RETIRED</b>
1997 G M & O Building— <i>Mobile</i>		<b>RETIRED</b>
1996 Bienville Square— <i>Mobile</i>		<b>RETIRED</b>
1995 Sand Island Lighthouse— <i>Mobile</i>		<b>RETIRED</b>
2011 Cross on the Beach— <i>Pensacola</i>		\$12.00
2010 Graffiti Bridge— <i>Pensacola</i>		\$12.00
2009 San Carlos Hotel— <i>Pensacola</i>		\$12.00
2008 Old Christ Church— <i>Pensacola</i>		\$12.00
2007 Blue Angels— <i>Pensacola</i>		<b>RETIRED</b>
2006 Saenger Theatre— <i>Pensacola</i>		\$12.00
2005 Pensacola Water Tower— <i>Pensacola</i>		\$12.00
2004 Pensacola Beach Sign— <i>Pensacola</i>		<b>RETIRED</b>
2003 Dorr House— <i>Pensacola</i>		\$12.00
2002 Pensacola Lighthouse— <i>Pensacola</i>		<b>RETIRED</b>
2001 Wentworth Museum— <i>Pensacola</i>		<b>RETIRED</b>
2000 Springhill Guesthouse— <i>Pensacola</i>		\$12.00
1999 Old Lace— <i>Pensacola</i>		<b>RETIRED</b>
	<b>SUBTOTAL</b>	
	<b>SHIPPING &amp; HANDLING (\$2.00 per ornament)</b>	
	<b>Total</b>	

**OFFICE USE ONLY:**

Employee Signature \_\_\_\_\_ Order Received: \_\_\_/\_\_\_/\_\_\_  
 Customer Picked Up: \_\_\_/\_\_\_/\_\_\_ Customer Will Pick Up: \_\_\_/\_\_\_/\_\_\_ Shipped On: \_\_\_/\_\_\_/\_\_\_ Initials: \_\_\_\_\_

## Available Mobile Area Ornaments—\$12.00 each



2011 Cannon at the Loop



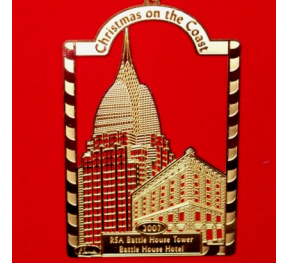
2010 Azalea Trail Maids



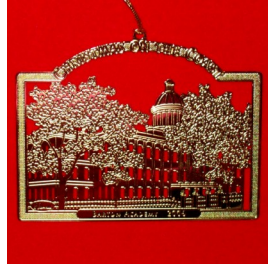
2009 Cathedral of the Immaculate Conception



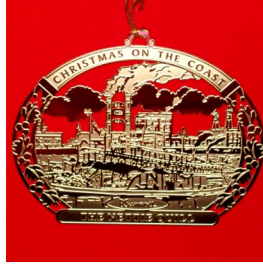
2008 Mobile Mardi Gras



2007 RSA Tower



2006 Barton Academy



2001 The Nettie Quill



2000 The Battlehouse

## Available Pensacola Area Ornaments—\$12.00 each



2011 Cross on Pensacola Beach



2010 Graffiti Bridge



2009 San Carlos Hotel



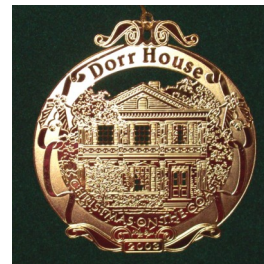
2008 Old Christ Church



2006 Saenger Theatre



2005 Pensacola Water Tower



2003 Dorr House



2000 Springhill Guesthouse